

DP611 Desalination Control Probe

Application and function

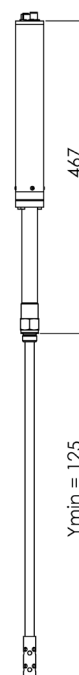
In conjunction with the DCD continuous desalination controller, the desalination control probe is the measurement probe for a desalination control system. The product meets EC Directive 97/23/EC (PED). Conformity (CE marking) is certified in accordance with Annex III, Module D1 (Category II); notified body NB 0035. Regulations applied: corresponding DIN EN standards.

Standard technical equipment

Mechanical connection	G ½	
Power connection	CAN-Bus in accordance with DIN ISO 11898 Electrical connector	
Materials	Electrode housing	Niro
	Electrode rod	Niro
	Electrode extension	Niro
	Insulator	PTFE
	Plug / socket	PA66, zinc diecasting

Electrical data

Responsiveness	>0.5µS/cm at 25° C
Power supply	24V
Power consumption	0.6W
Data exchange	CAN-Bus in accordance with DIN ISO 11898, CANopen protocol
Electrical connection	CAN-Bus in accordance with DIN ISO 11898
Protection class	IP65 in accordance with DIN EN 60529
Allowable ambient temperature:	0° C to 85° C
Self-test	every 3sec



Technical data

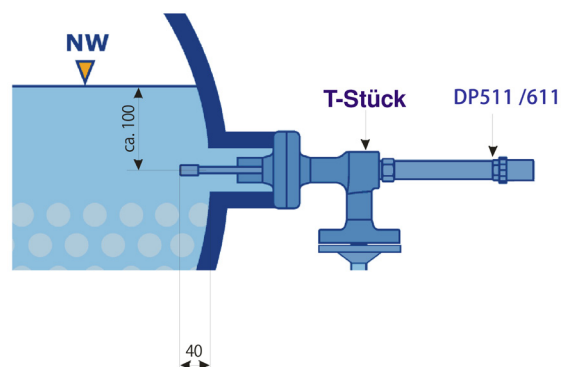
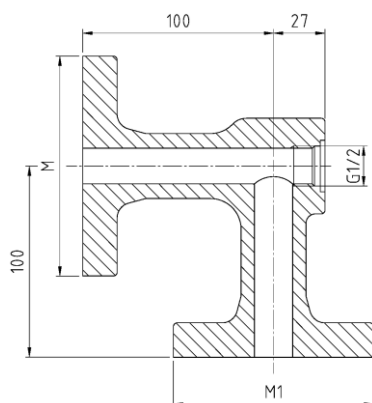
CE ID no.:	CE 0035		
Allowable pressure	PS	[bar]	32
Allowable temperature	TS	[° C]	239
Plug / socket	M12; 5-pole; A-coded		
Protection class in accordance with DIN VDE 0470	IP65		
Allowable temperature at the plug	85° C		

Construction dimensions Y [mm] min. 125		
1700	with protective tube > DN80	horizontal installation position
800	with protective tube DN50/100	installation position inclined up to 45°

Mounting housing

- Use in mounting housing if shut-off valves are fitted between process connection and boiler supports. A relief valve is likewise required
- On use in mounting supports if the boiler support corresponds to the representations according to Data Sheet D-08-D-16351-0. Protective tube K, flange, screws, nuts and seals can also be supplied.
- For electrode support flange see Data Sheet D-08-D-22510-0

The electrode must not be either extended or shortened



PN	Process connection M		Desalination valve connection M1	
	DN	DIN 2535 Form B	DN	DIN 2535 Form B
40	20		15	
	25		20	

