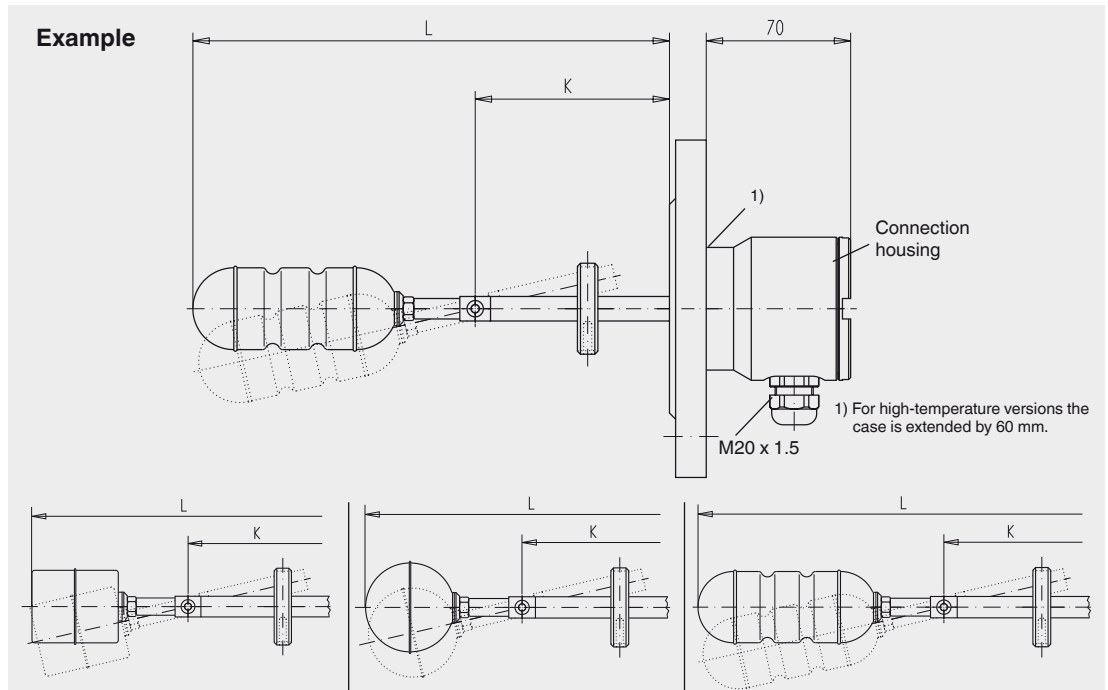


# Magnetic float switch, standard version, model HLS-S

Process connection, contact tube and float from stainless steel 1.4571



	Float model V44HI	Float model T52HI and T52HI/Gr. 5	Float model ZVSS43/100HI
Electrical connection	Connection housing	■ Stainless steel 1.4571	
Process connection	Mounting flange	■ DIN DN 50 ... DN 100, PN 6 ... PN 400 ■ EN 1092 DN 50 ... DN 100, PN 6 ... PN 400 ■ ANSI 2" ... 4", class 150 ... 600 ■ Square flange DN 80 and DN 92 (other flanges on request)	
Contact tube			
Insertion length L	193 ... 990 mm	185 ... 990 mm	240 ... 990 mm
Contact tube length K	100 ... 900 mm	100 ... 900 mm	100 ... 900 mm
Float material	Stainless steel 1.4571	Model T52HI: Titanium 3.7035, grade 2 Model T52HI/Gr. 5: Titanium 3.7165, grade 5	Stainless steel 1.4571
Float			
Diameter	44 mm	52 mm	43 mm
Length	52 mm	52 mm	100 mm
Max. operating pressure	6 bar	Model T52HI: 100 bar Model T52HI/Gr. 5: 232 bar	20 bar
Min. density	600 kg/m <sup>3</sup>		
Temperature range			
Standard	-40 ... +250 °C		
Option: ■ High-temperature version:	-20 ... +350 °C		
Option: ■ Low-temperature version:	-196 ... +250 °C		
Switching function	selectable: 1 x change-over SPDT 1 x normally open NO - on rising level 1 x normally closed NC - on rising level 1 x proximity switch I - on rising or falling level		
Switching power	AC 230 V; 40 VA; 1 A	DC 230 V; 20 W; 0,5 A	<b>Please observe contact protection measures!</b>
	Attention: Versions without protective conductor connection - operation only at safety extra-low voltage e.g. contact protection relay or external grounding		
Mounting position	Horizontal ±30°		
Ingress protection	IP 67 per EN 60529 / IEC 60529		

Versions in titanium, Hastelloy or other materials on request