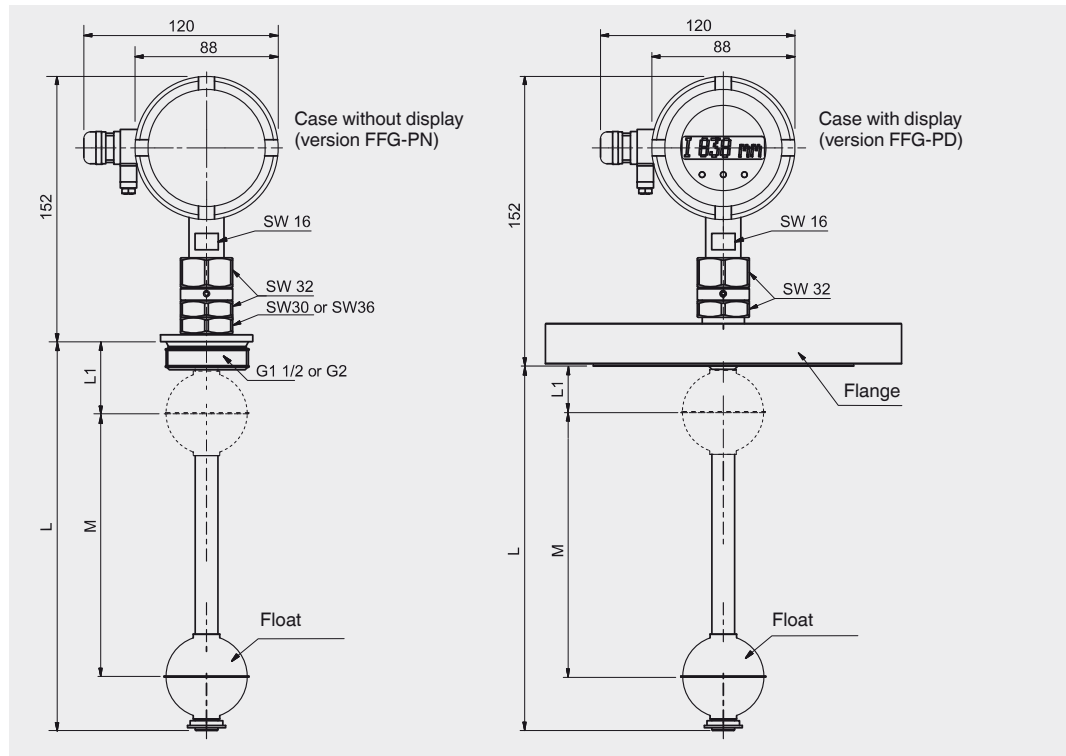


Sensor, standard, model FLM-S

Process connection, guide tube and float from stainless steel 1.4571



Mounting thread		Flange		
Electrical connection	Sensor housing ■ Stainless steel 1.4404 (316L) Version FFG-PN without display Version FFG-PD with window and display			
Display	LCD matrix (only version FFG-PD)			
Process connection	Mounting thread downwards G 1 1/2" or G 2"		Mounting flange ■ DIN DN 50 ... DN 200, PN 6 ... PN 100 ■ ANSI 2" ... 8", class 150 ... 600	
Guide tube diameter	14 mm	18 mm	14 mm	18 mm
Guide tube length L max.	3,000 mm	5,800 mm	3,000 mm	5,800 mm
Float	Material stainless steel 1.4571 (option: Titanium) Float diameter from 44 ... 120 mm Float selection depending on guide tube diameter and process conditions (see page 8) Attention: With Ex approval no floats from titanium may be used.			
Max. operating pressure	40 bar (100 bar with float from titanium), see table on page 8			
Temperature range Standard	Medium: -60 ... +185 °C Ambient temperature: - Standard, version without display -40 ... +85 °C - Standard, version with display -20 ... +70 °C - Version Ex i T3/T4/T5/T6 -20 °C ... +70/+70/+70/+60 °C - Version Ex d T3/T4/T5/T6 -40 °C ... +70/+70/+70/+60 °C			
Output signal	4 ... 20 mA, HART®			
Power supply	DC 10 ... 30 V			
Measuring accuracy	< ±0.5 mm			
Resolution	< 0.1 mm			
Load	max. 900 Ω at 30 V			
Mounting position	Vertical ±30°			
Ingress protection	IP 68 per EN 60529 / IEC 60529			